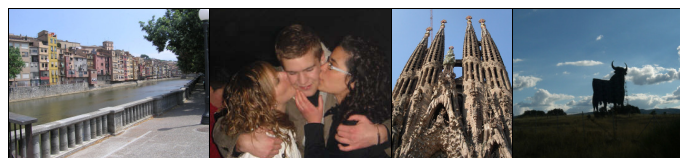


Spain



	Programme price in Euros*	Departure date	Return date	Application completed by
2/3 months	E2785	7-21 Nov 2011	2/3 months later	21 Aug.
Autumn semester	E3475	15-30 Sept. 2011	1-5 Feb. 2012	1 June.
Spring programme	E3475	5-10 Feb. 2012	End of June 2012	1 Nov.
Academic year (9 months)	E4450	15-30 Sept. 2011	End of June 2012	1 June.
Academic year (11 months)	E5090	5-10 Feb. 2012	20 Dec. 2012	1 Nov.
Calendar Year	E5250	5-10 Feb. 2012	27-30 Jan. 2013	1 Nov.

*Prices are subject to change without notice as contracts are renegotiated and exchange rates fluctuate.

**Fees above do not include airfares which are charged separately. Fees are credited in Euros at the exchange rate on the day of payment.

Programme lengths

These are variations on the usual semester and academic year programmes found in other parts of Europe. Actual start and finish dates may be slightly different from those listed. Please ask. Other short programmes may be available.

Language requirements

Students who have studied a language before, especially French or Italian, will have less difficulty in picking up Spanish than would a first-time language learner. Students are sometimes accepted if they have not studied Spanish before they apply but they generally find the learning curve very steep.

You will be more comfortable adapting to Spanish culture if you have had at least two years of formal study of Spanish at the time you apply. The more you have, the faster you will adapt and the more you will gain from an exchange.

Orientation

We give all students an orientation before they leave and you will receive another brief orientation in Spain on arrival.

Placements

These are made as soon as possible and if you have applied at the correct time you should be in contact with your host family for at least a week before you leave. Some students are in contact for a month or more. However, in Spain, placements are typically late and waiting can be stressful.

Host families have to go through an interview and vetting process. Most placements are around Madrid in central Spain and in the northwest but you can be placed anywhere in the country. Your personality and preferences are taken into account if at all possible, but the supply of generous and welcoming families is not bottomless and you must be prepared to adapt to the situation you are given.

Successful placements depend as much upon you as upon the family you're given. Some students stay with the same family for a whole year while others may have two or three families.

Gap Year students

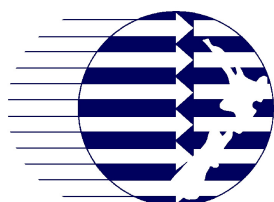
You can go to Spain when you are 18 and can turn 19 while on exchange, but you must apply while still enrolled at school in NZ. Spanish students are generally a little older than NZ students at the same stage of their schooling. As a gap year student you can have a little more freedom than most other students during the summer break in Spain but we need to be sure of your suitability. The basis of an exchange is that you become part of a family and don't just use the family home as a place to sleep while you're having fun.

Applications

The deadlines listed are for when we have to have your application in Spain. In the past this has turned out to be very important. Applications begin with the simple form in the initial application brochure. It requires basic family and school details, a photo, the permission of your parents or guardians, a copy of your passport and \$50 to convince us that you're serious. It is followed by a full application form in English. This takes most people quite a while to do. It is followed by an interview/chat at home with at least one of your parents/guardians present and takes about two and a half hours. Most people who get to this stage are able to go. If the interview works well, we'll begin looking for a placement for you, booking flights, buying insurance and obtaining a visa. This can take three months, so it is good to apply early.

Visas

We arrange these for you. Spanish bureaucracy is fairly ponderous and demanding and you will be asked to obtain apostille stamps and other documents before you leave. It is important that this be done quickly.



NZIIU
New Zealand Institute for International Understanding
8 Manukau Road, PO Box 99229, Newmarket, Auckland 1149
www.student-exchange.co.nz ian@nziiu.co.nz